

HEADSTOCK POSITIONERS

Features

- The 5 sides of the housing are provided with tapped holes, which permit random mounting positions allowing various jig systems to be set up
- A hole through the center of the rotary table enables easy routing of cables and hoses
- A secondary terminal for welding (500A) is provided as standard built-in equipment
- Can be used as a single-axis, double support positioner in combination with the tailstock and stand (optional)
- Application signal cable and 4 air inlet ports can be fed through the center of the table (optional)
- Voltage detection wire and connection terminal to let the low spatter welding power supply DL350 to perform optimally are provided as standard.



Model A2PB-250



Model A2PB-500



Model A2PB-1000

Specifications

Model Number	A2PB-250	A2PB-500	A2PB-1000
Maximum Payload Capacity	250kg	500kg	1000kg
Rotating Speed	2.6 rad/s (150°/sec)	2.1 rad/s (120°/sec)	1.3 rad/s (172°/sec)
Allowable Rotating Moment	206 N•m	490 N•m	1078 N•m
Positional Repeatability	±0.1mm (Position at R300mm)	±0.1mm (Position at R300mm)	±0.1mm (Position at R300mm)
Stop Position	Any Position	Any Position	Any Position
Mass (Weight)	110kg	170kg	220kg

2 AXIS POSITIONERS

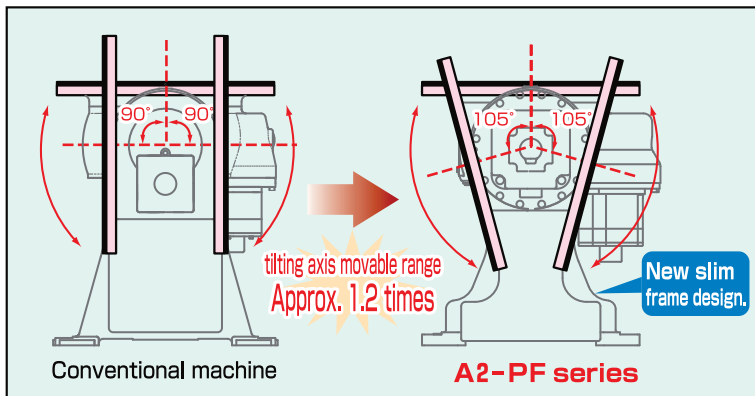
High speed motion increases production efficiency – An increase in the maximum rotation speed of the tilting axis by 2.5 times and in rotation axis by 2 times was achieved in comparison with the conventional machine 300kg payload type.

Continuous welding (100% duty cycle) at 500A can be standard – providing a collecting brush additionally as an option can increase the maximum welding current up to 1000A at 60% duty cycle.

Our product line includes a model with a maximum payload capacity of 1000kg for large workpieces.



Model A2PF-1000



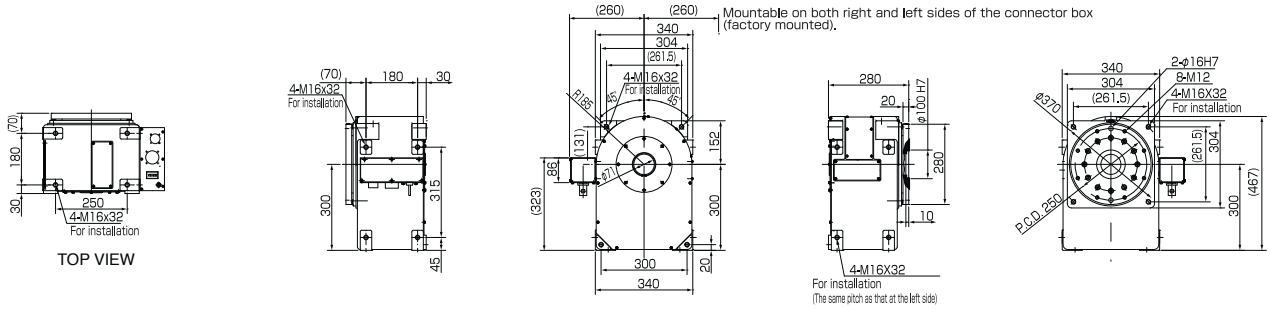
- Streamlining of the frame increases the movable range of the inclined axis by 1.2 times in comparison with that of the conventional machine. (the ratio in case of mounting a jig and workpiece (Ø600mm or less) larger than that of the face plate)
- Because the inclined axis falls down to both sides ($\pm 135^\circ$), a workpiece can be carried in and out easily and an optimal welding posture can be taken
- The application cable (for signal) and 4 air inlet ports can be fed through the center of the table. (Option)
- The voltage detection wire and the connection terminal let the low spatter welding power supply DL350 perform optimally are provided as standard

Specifications

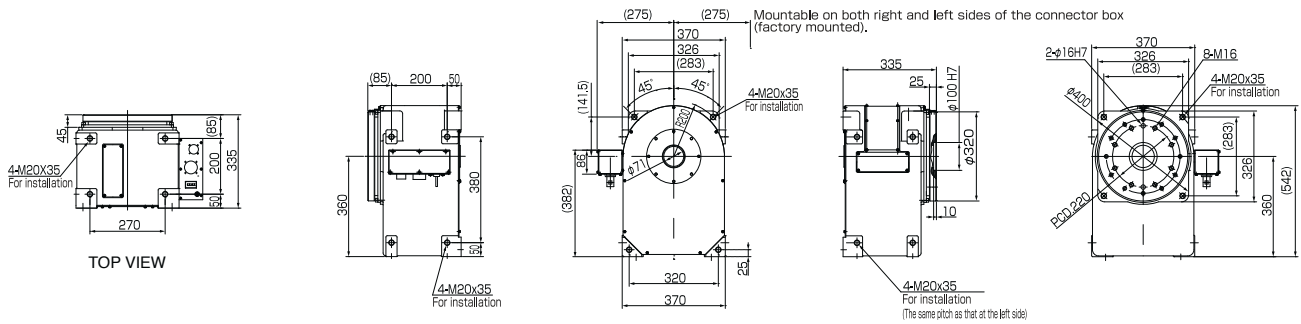
Model Number	A2PF-300	A2PF-500	A2PF-1000
Maximum Payload Capacity	300kg	500kg	1000kg
Rotating Speed	3.1 rad/s (180°/sec)	2.8 rad/s (162°/sec)	2.9 rad/s (166°/sec)
Tilting Speed	2.2 rad/s (125°/sec)	1.5 rad/s (84°/sec)	1.4 rad/s (82°/sec)
Allowable Rotating Moment	294 N•m	392 N•m	882 N•m
Allowable Tilting Moment	882 N•m	1347 N•m	3704 N•m
Positional Repeatability	± 0.08 mm (Position at R250mm)	± 0.08 mm (Position at R250mm)	± 0.08 mm (Position at R250mm)
Stop Position	Any Position	Any Position	Any Position
Mass (Weight)	260kg	260kg	470kg

POSITIONER DIMENSIONS

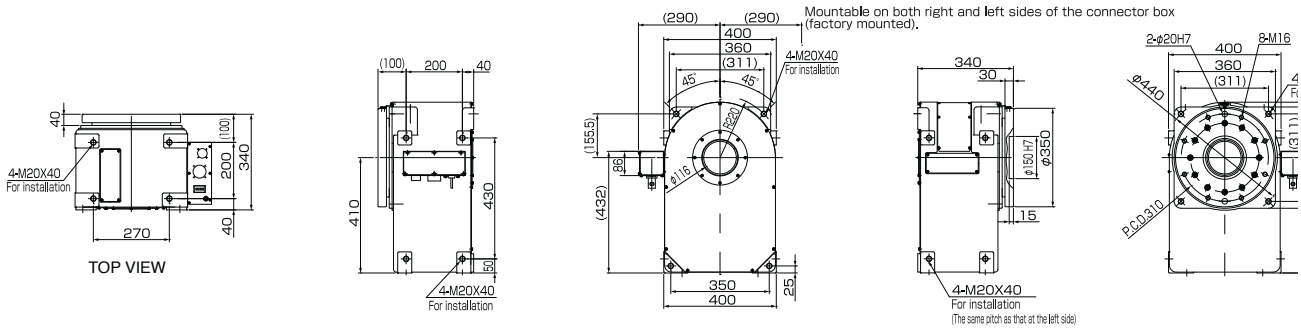
A2PB-250 Dimensions



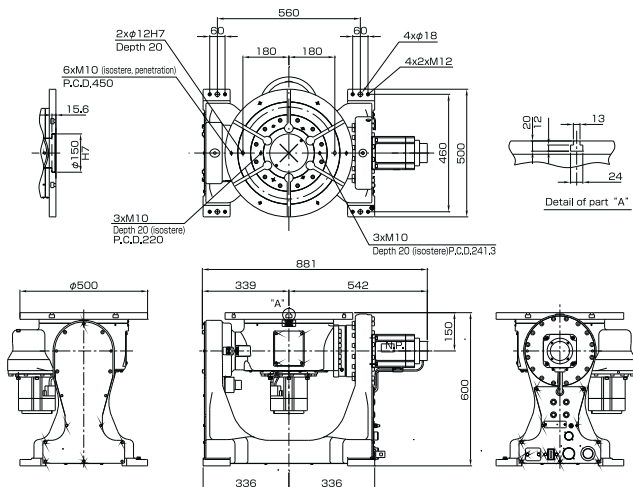
A2PB-500 Dimensions



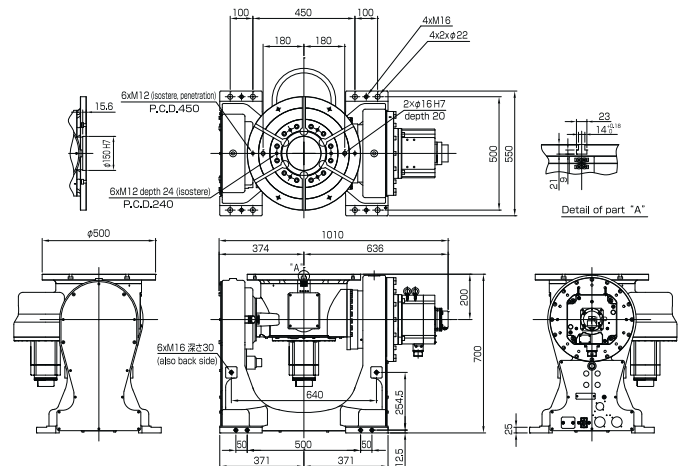
A2PB-1000 Dimensions



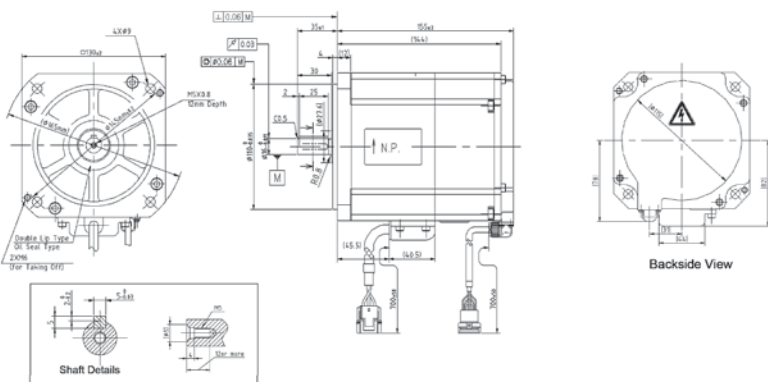
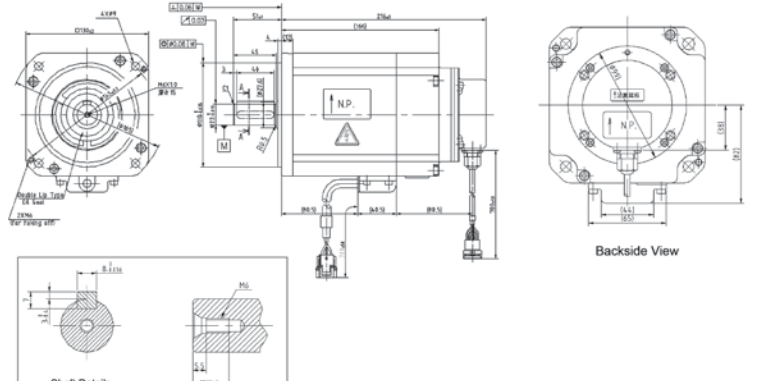
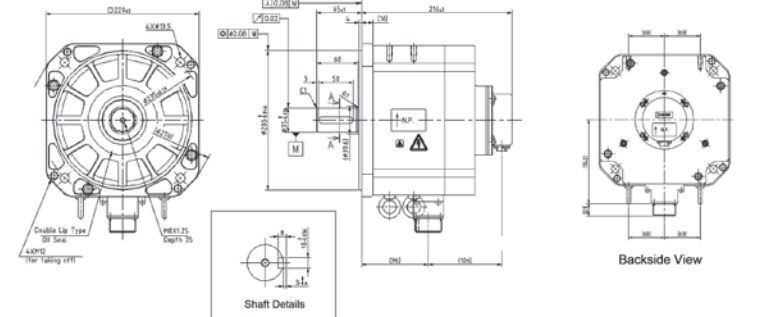
A2PF-300, A2PF-500 Dimensions



A2PF-1000 Dimensions






EXTERNAL AXIS PACKAGES

Motor / Specifications	Dimensions
<p>1.2kW</p> <p>Part Number W-L02641</p> <p>Output Power: 1200W Rated Speed: 2000 rpm Rated Torque: 5.7 N•m Maximum Torque Peak: 16 N•m Inertia (Rotor + Brake): 6.1×10^{-4} kg•m² (Rotor), 0.5×10^{-4} kg•m² (Brake) Static Friction Torque on Brake: 9.0 N•m or more Weight: 18 lbs (8.3kg)</p> <p>Assembling: Running: Max F_R: 640 N Max F_R: 640 N Max F: 1300 N Max F: 340 N Max F1: 1300 N Max F1: 340 N</p>	 <p>Technical drawings for the 1.2kW motor, including front view, side view, backside view, and shaft details. Dimensions are provided in millimeters.</p>
<p>2.0kW</p> <p>Part Number W-L02152</p> <p>Output Power: 2000W Rated Speed: 2000 rpm Rated Torque: 9.5 N•m Maximum Torque Peak: 30 N•m Inertia (Rotor + Brake): 12.2×10^{-4} kg•m² (Rotor), 0.5×10^{-4} kg•m² (Brake) Static Friction Torque on Brake: 12 N•m or more Weight: 27 lbs (12.3kg)</p> <p>Assembling: Running: Max F_R: 1700 N Max F_R: 640 N Max F: 1400 N Max F: 340 N Max F1: 1400 N Max F1: 340 N</p>	 <p>Technical drawings for the 2.0kW motor, including front view, side view, backside view, and shaft details. Dimensions are provided in millimeters.</p> <p>Note: All dimensions above are in [mm]</p>
<p>4.5kW</p> <p>Part Number W-L02157</p> <p>Output Power: 4700W Rated Speed: 2000 rpm Rated Torque: 22.5 N•m Maximum Torque Peak: 54 N•m Inertia (Rotor + Brake): 55.0×10^{-4} kg•m² (Rotor), 5.1×10^{-4} kg•m² (Brake) Static Friction Torque on Brake: 42 N•m or more Weight: 61.7 lbs (28.0kg)</p> <p>Assembling: Running: Max F_R: 2300 N Max F_R: 1500 N Max F: 1900 N Max F: 490 N Max F1: 1900 N Max F1: 490 N</p>	 <p>Technical drawings for the 4.5kW motor, including front view, side view, backside view, and shaft details. Dimensions are provided in millimeters.</p>

OPTIONAL EQUIPMENT

Torch Cleaning Equipment

Item		Part Number
 Nozzle Cleaning Machine (100VAC Input)		K-2724
 Nozzle Cleaning / Cutting Machine (100VAC Input)		K-2725
 Wire Cutting Machine (100VAC Input)		K-2726
Spring Reamer & Vacuum Cleaner (100VAC Input)		L-10748
Step Down Transformer (Required for all Stations)		VC500J
For Cleaning and Cleaning & Cut Stations	13mm Reamer Drill (#8 Nozzle)	5096-145
	13mm Reamer Bushing (#8 Nozzle)	5096-148
	16mm Reamer Drill (#10 Nozzle)	5096-146
	16mm Reamer Bushing (#10 Nozzle)	5096-149
	19mm Reamer Drill (#12 Nozzle)	5096-147
	19mm Reamer Bushing (#12 Nozzle)	5096-150
For Cut and Cleaning & Cut Stations	Shearing Blade for Wire Cutter	5096-306
	Shearing Blade for Wire Cutter	5096-307
Clean Kit Stand Assembly		1L0298B00

Robotic Zone Kits

Item	Part Number
2 Station Zone Kit for FD-V6 / FD-B4	1L0448A00
2 Station Zone Kit for FD-V6L / FD-B4L	1L0370A00
3 Station Zone Kit for FD-V6L / FD-B4L	1L0396A00
400mm Robot Pedestal for FD-V6/B4 & FD-V6L/B4L	L-3626
800mm Robot Pedestal for FD-V6/B4 & FD-V6L/B4L	L-3626-800

For more information on  brand products from DAIHEN Inc., visit our website at www.daihen-usa.com, or send us e-mail at sales@daihen-usa.com.



OTC DAIHEN INC.
(Headquarters)
1400 Blauser Dr., Tipp City, OH 45371
Ph: 937-667-0800 • Fax: 937-667-0885

Branch Offices: Atlanta, Georgia
Charlotte, North Carolina
Monterrey, Mexico
Novi, Michigan